
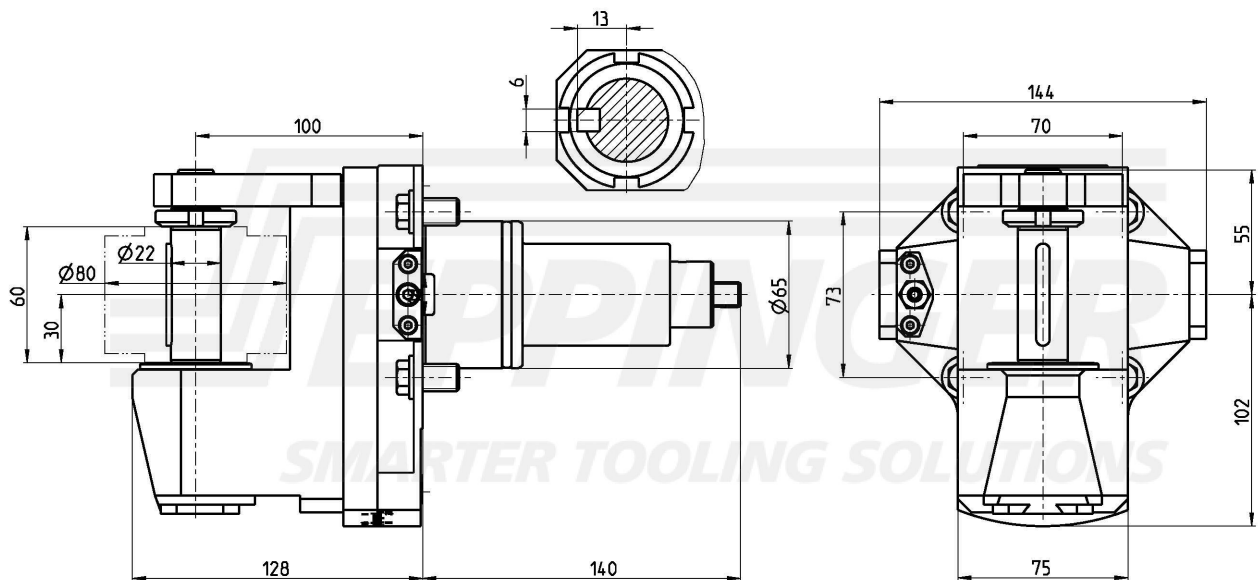
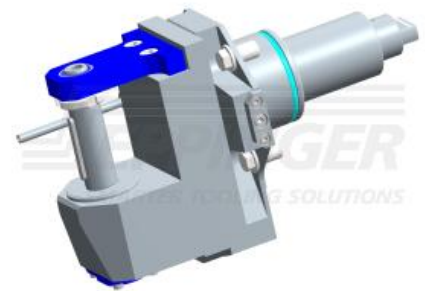




**Device for gear milling  
chuck for cutter arbor  $\varnothing 22$ , angle adjustable  $\pm 20^\circ$ , CC**

**Part Number**      **7.170.555**  
**for**                      **EMAG VT4/VT200 VTC200/250 (BMT65) (\*)**

Ratio                      **2:1**  
rpm at Input              **max. 6000 rpm**  
rpm at Output             **max. 3000 rpm**  
Torque at Output         **max. 45 Nm**  
Direction of Rotation     



Technical Data Subject to Change

19.12.2016 | 19.12.2016