
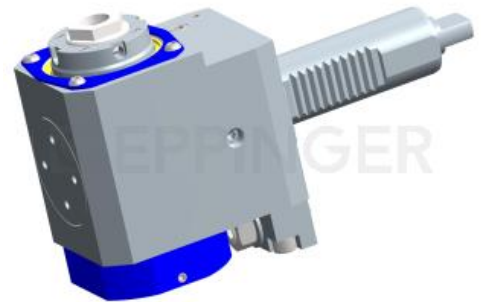


Drilling and milling head, angular, left hand adjustable alignment pin collet chuck, ER20A, PRECI-FLEX® external and central coolant supply



Part Number 3.201.295
for DMG MORI NL1500-2500 (VDI30)

Ratio **1:1**
 rpm at Input **max. 6000 rpm**
 rpm at Output **max. 6000 rpm**
 Torque at Output **max. 30 Nm**
 Direction of Rotation 
 Scope of Delivery **without wrench and collets**
*** Actual size inscribed on the tool**



Accessories Collets see Equipment for Toolholders Z2.1
 Sealing washers see Equipment for Toolholders Z4.1
 Wrench for spindle 10006
 PRECI-FLEX® Adapter
 Spindle cover see P99.1
 Coolant tubes 218.844.220

