
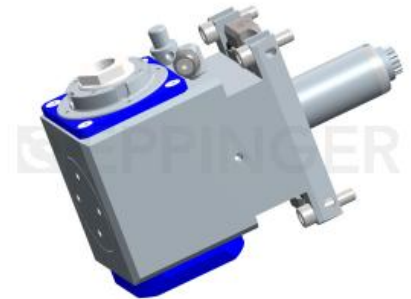


Drilling and milling head, angular, right hand  
collet chuck, ER20A, PRECI-FLEX®, Trifix®  
external coolant supply



产品编号 2.700.270  
适配 Sauter DIN5480 (25) W14x0.8x16 8000

传动比 1:1  
输入转速 max. 8000 1/min  
输出转速 max. 8000 1/min  
输出扭矩 max. 25 Nm  
旋转方向   
交货期 without wrench and collets  
\* Actual size inscribed on the tool



附件 Collets see Equipment for Toolholders Z2.  
Wrench for spindle 0.002.325  
PRECI-FLEX® Adapter  
Protection cover for spindle see P99.1

